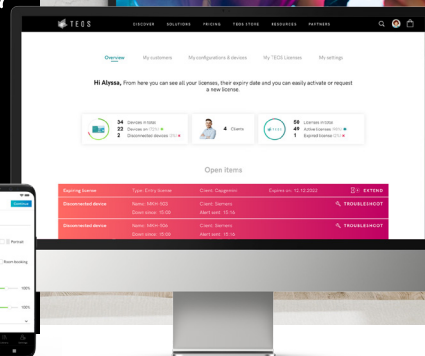
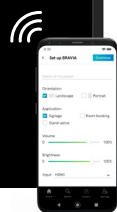


BRAVIA SUPERVISOR

Quick Start Guide

How to use BRAVIA Supervisor

Bravia supervisor is a cloud platform which proposes the provisioning of BRAVIA monitors using a combination of Serial number and MAC address to add the device. Configurations (profiles) can be created to simplify the integration.

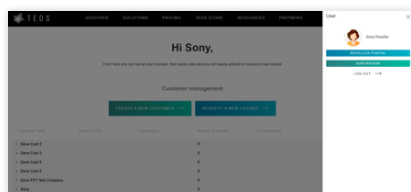


Step 1: Purchase a BRAVIA BZ model /TM

This specific reference available for all the BRAVIA professional line up is delivered with a setup for zero touch config

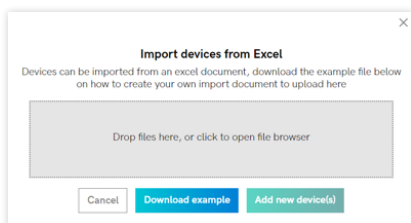
Step 2: Get the monitors serial number and MAC Address

When purchasing your /TM monitors, you will receive with the invoice, the list of purchased hardware with model name, serial number and Mac address are available and which are reserved. Serial number and MAC address are used to register the device in BRAVIA supervisor platform



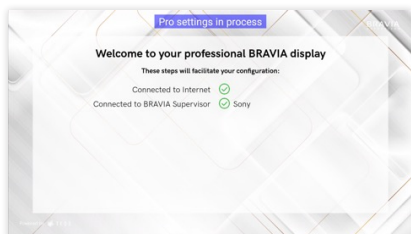
Step 3: login to your BRAVIA Supervisor platform

If you are a TEOS solution partner, under <https://teos.solutions>, you can use your partner portal to login and get access to supervisor. You can in this interface create new customers and add devices on your customers



Step 4: Import devices and apply configurations to your customers

Within the supervisor view of your customer, import the list of devices with their Serial number and Mac address received from Sony. You can also define device name and IP address if a fixed IP need to be setup. After uploading the excel file, select the configuration to send to all the devices from the excel list. When the devices will be connected, they will directly apply it.



Step 5: Install the devices and connect them to internet

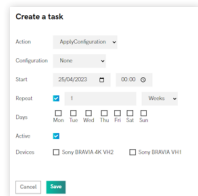
Install the device on customer site and connect it to the network using RJ45 wired cable or via WIFI (wired recommended and quicker), if the devices are not connected to end user network, share a network WIFI with SSID: braviaconnect and password: Sony1234 to get the device connected and apply your configuration when installing. With wired connection or WIFI sharing, no action is needed in the screen, configuration is directly pushed

What can be done with BRAVIA Supervisor



Define your own BRAVIA configurations

Define a set of Configurations for the different type of uses of your BRAVIAs (from brightness, to HDMI auto switching, application installation and Pro mode definition), for example settings depending on customers or on environment (meeting room, signage...). You can then assign configurations to your customers devices when you want, no need to do it in front of a monitor. Configurations can be exported and imported into end user environments.



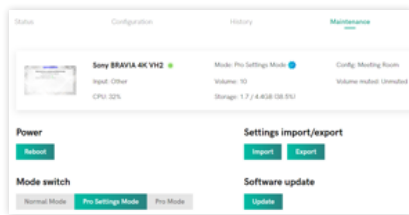
Create task to schedule your configurations

Define when (date and time, and recurrency) the configurations are sent to the devices. Example, every day of the week at 8am, all the devices' volumes must be at level 5.



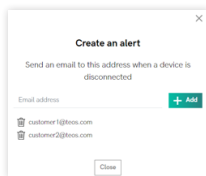
Get status of devices and virtual remote

As provided by TEOS Manage devices, check the status of the devices (connected, ON/OFF, in an input), get live screenshots of the devices (not for HDMI for confidentiality) and remote support with direct commands such as ON/OFF, reboot, change input, volume etc.



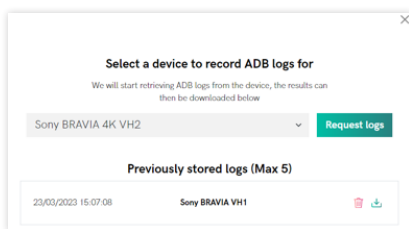
Remote Firmware upgrade or pro mode switch

Firmware upgrade of devices can be performed and the switch between Normal mode/pro mode settings/pro mode can be done remotely



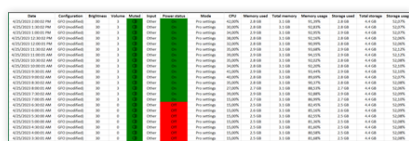
Get email alerts from devices disconnected

Add email addresses to get alert for the different customers. Get alerts then when devices are disconnected from the platform



Download logs from devices for troubleshooting

For remote troubleshooting, logs from the device can be stored in the platform and downloaded. Logs are taken for a 5 minutes period when requesting them



Extract statistics of usage of your devices

Extract data of devices with configuration, brightness, volume, input state, power status, CPU, memory usage, storage. This data is stored into Supervisor platform for every device and taken every 30 minutes. The data of devices is stored and refreshed in the platform every 3 months



Screenshot device history

Define a timeframe from 1 minute to every month and the date to get an history with screenshots of the devices for remote troubleshooting purpose and verification